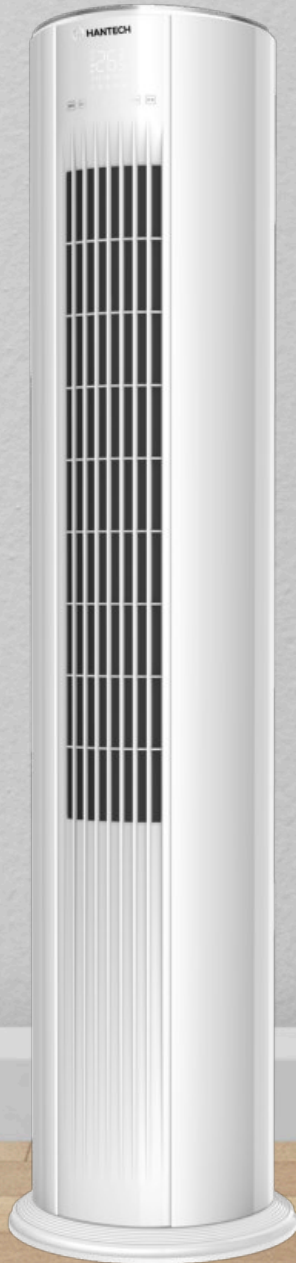


EISTURM

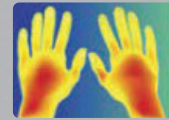


Change the mood of your home



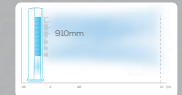
I-Feel

With the built-in sensor range in the remote control, the unit can more accurately monitor the room temperature in areas of Provides users with more precise temperature..



Wide Air Distribution Range

The height of the air outlet is 910mm, the airflow can reach up to 10m, and it has a wider airflow range.



Unique Grille Design

The artistic grille is inspired by classic model cars that are decorative and charismatic.



Quiet Operation

The noise is as low as 22dB [the lowest].



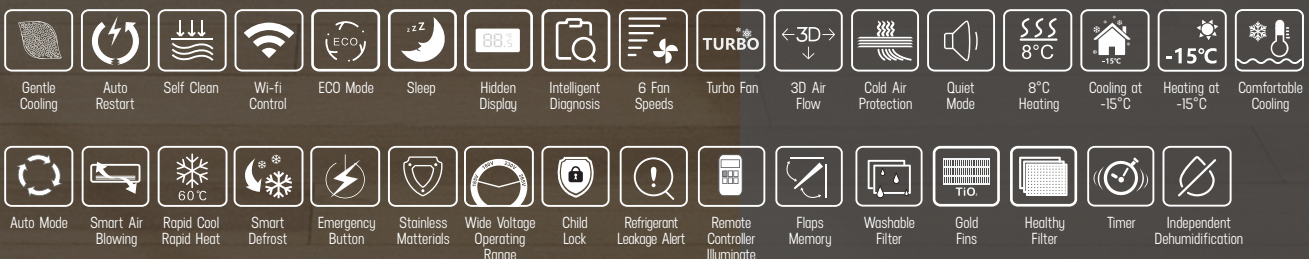
3D Airflow

Thanks to the Coanda effect louvers and wings, the air is directed both vertically and horizontally, providing a 3D airflow experience. Cooling/heating air can reach every corner of the room more efficiently and effectively.



Wi-Fi Control

Even if you are outside, you can control your Air Conditioner from your smart phone or mobile devices via on Wi-Fi. It allows you to monitor your energy consumption.



Technical Specifications			
Model Set Code		-	HNT-F24VMTC/S
Indoor Unit Model Code		-	HNT-F24VMTC/I
Outdoor Unit Model Code		-	HNT-F24VMTC/O
Controller Type		-	Remote Controller
Cooling Capacity		bTU/h	22.500 (3.038 ~ 24.780)
		W	6.950 (890 ~ 8.500)
Heating Capacity		bTU/h	24.500 (3.038 ~ 27.030)
		W	7.310 (890 ~ 9.800)
Pdesign	Cooling	W	6950
	Heating	W	5800
	Warmer	W	-
Energy Efficiency	Cooling	SEER	6,10
	Heating	SCOP	4,00
	Warmer	SCOP	-
Energy Class	Cooling	-	A++
	Heating	-	A+
	Warmer	-	-
Annual Energy Consumption	Cooling	kwh/a	399
	Heating	kwh/a	2030
	Warmer	kwh/a	-
Moisture Removal		Litre/s	2,4
Sound Information			
Indoor Unit Sound Power	(S/H/M/L/Mute)	dB(A)	57/53/44/40
Indoor Unit Sound Pressure	(S/H/M/L/Mute)	dB(A)	47/43/34/30
Outdoor Unit Sound Power		dB(A)	61
Outdoor Unit Sound Pressure		dB(A)	51
Fan Information			
Indoor Unit Fan Type		-	Cross Flow
Indoor Unit Air Circulation	Cooling / Heating	m3/h	1250/1300
"Indoor Unit Fan Speed S/H/M/L/Mute"	Cooling	rpm	1150/1050/960/880/800/720/660
	Heating	rpm	1150/1050/960/880/800/740/660
	Dry	rpm	720
	Sleep	rpm	720/740
Outdoor Unit Fan Type		-	Propeller Fan
Outdoor Unit Air Circulation		m3/h	-
Outdoor Unit Fan Speed S/H/M/L/Mute		rpm	880
Electrical Information			
Power Supply		Volt, Hz, Ph	220-240V~/50Hz/1Ph
Power Supply Side		-	Outdoor
Power Supply Wiring		Core x Size	3x2.5mm ²
Automatic Fuse Current (No Delay)		A	16
Voltage Range		V	165~265
Operating Current	Cooling	A	10.8(1.2~14.6)
	Heating	A	11.3(1.2~16.1)
Power Consumption	Cooling	W	2350(260~3200)
	Heating	W	2520(260~3630)
Intermediate Installation Information			
Connecting Wiring		Core x Size	4x0.75mm ²
Connecting Wiring	Gas	Inc - (mm)	1/2" - (Φ12.7)
	Liquid	Inc - (mm)	1/4" - (Φ6,35)
Maximum Refrigerant Pipe Length		m	15
Maximum Difference In Level		m	5
Maximum Length Without Gas Charge		m	5
Additional Refrigerant Amount		Gr / Mt	25g/m
Refrigerating Type		-	R32
Charge		kg	1,5
GWP		-	675
CO ² Equivalent		Tonnes	1,013
Other Information			
Application Area	Minimum ~ Maksimum	m ²	30~50
Operation Temperature Range		°C	16 ~ 31
Outdoor Unit Ambient Temperature Range	Cooling	°C	-15 ~ 53
	Heating	°C	-15 ~ 30
Indoor Unit Ambient Temperature Range	Cooling	°C	17 ~ 32
	Heating	°C	0 ~ 30
Indoor Unit Net Dimensions	W x H x D	mm	416x1738x416
Indoor Unit Net Weight		kg	27
Outdoor Unit Net Dimensions	W x H x D	mm	853x602x349
Outdoor Unit Net Weight		kg	36
Indoor Unit Packing Dimensions	W x H x D	mm	490x1855x453
Indoor Unit Packing Weight		kg	33
Outdoor Unit Packing Dimensions	W x H x D	mm	890x628x385
Outdoor Unit Packing Weight		kg	40

*Measurement Conditions: Cooling indoor environment 27°C DT / 19°C WT, Cooling outdoor 35°C DT / 24°C WT, Heating indoor 20°C DT, Heating outdoor 7°C WT. [DT: Dry Thermometer; WT: Wet Thermometer] [EER and COP: EN 14511, SEER and SCOP: EN 14825 calculated according to measurement standards].





HANTECH

DAS KLIMA



HANTECH GmbH

Daimlerstraße 6, 76185
Karlsruhe, Germany
Tel/Faks: +49 721 47037334

info@hantech.eu
www.hantech.eu



HantechTürkiye



HantechTürkiye



hantechturkiye



company/hantechturkiye



┌

┐

└

┘